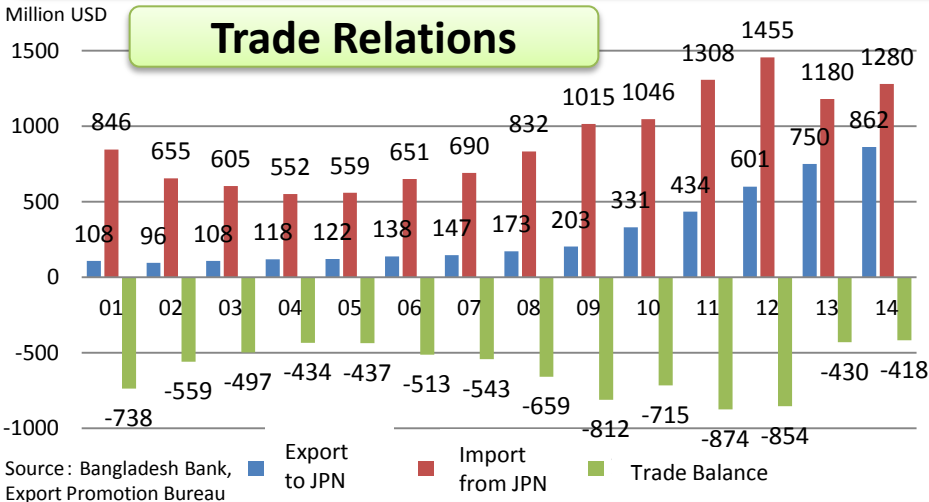


# Japan – Bangladesh Economic Relations

## FACTS: Trade & Investment

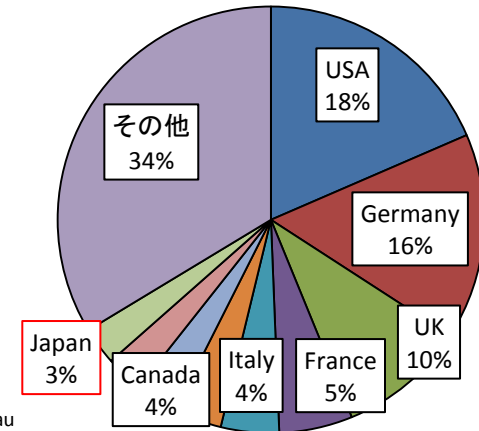
- Export to Japan have increased by 4 times since 2009.
- Apparel Export to Japan has increased by 7.1 times since 2009.
- The number of Japanese Companies doing business in Bangladesh increased by 2.7 times since 2009.
- Total number of Japanese living in Bangladesh is 908. Increased by 1.8 times since 2009.

### Trade Relations



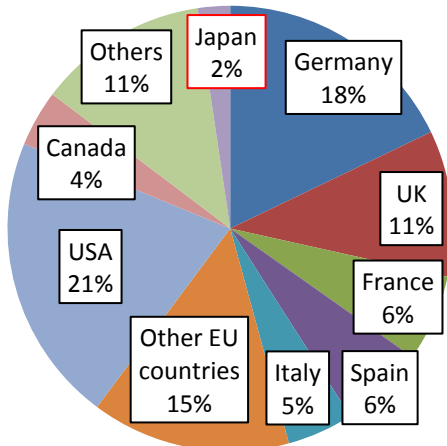
### Major Country-wise Export (FY2014)

- 1st U.S.A  
2nd Germany  
3rd U.K.
- 
- 7th JAPAN

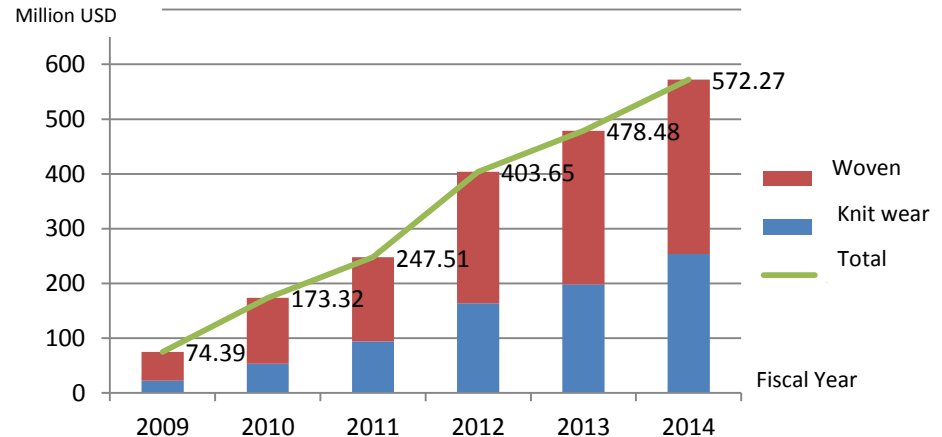


### Country wise export of RMG (FY2014)

- 1st USA  
2nd Germany  
3rd UK  
4th France  
12th Japan



### RMG Export to Japan

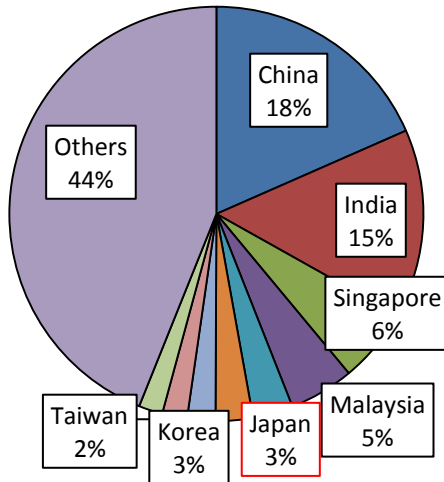


# Japan – Bangladesh Economic Relations

July 2015  
Embassy of Japan  
in Bangladesh

## Major Country-wise Import (FY2014)

- 1st China
- 2nd India
- 3rd Singapore
- 4th Malaysia
- 5th JAPAN



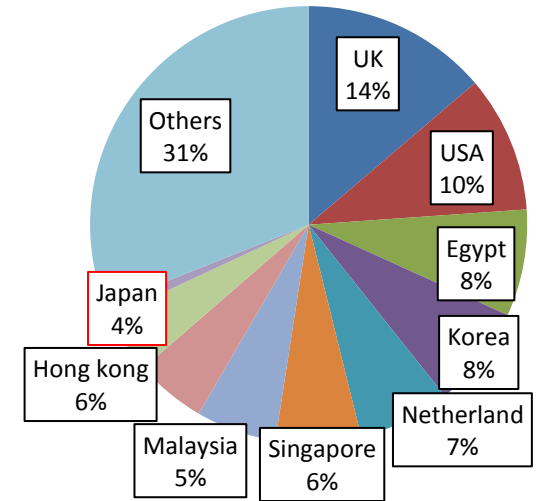
Total import  
40.67 Billion USD

Source : Export Promotion Bureau

## Major Country-wise Investment

(Total of FY1997-FY14)

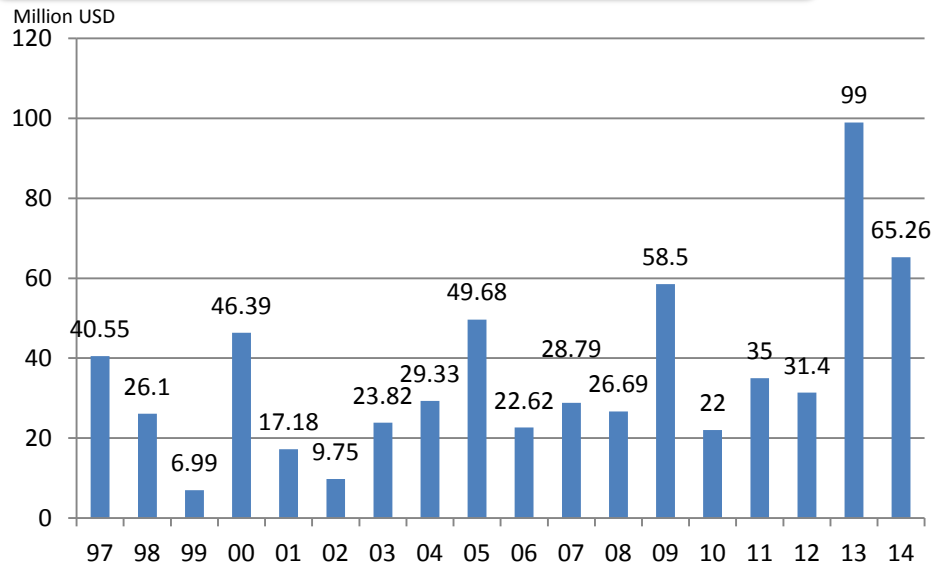
- 1st UK
- 2nd USA
- 3rd Egypt
- 9th JAPAN



Total Investment  
( FY1997-14 )  
13.56 Billion USD

Source : Bangladesh Bank

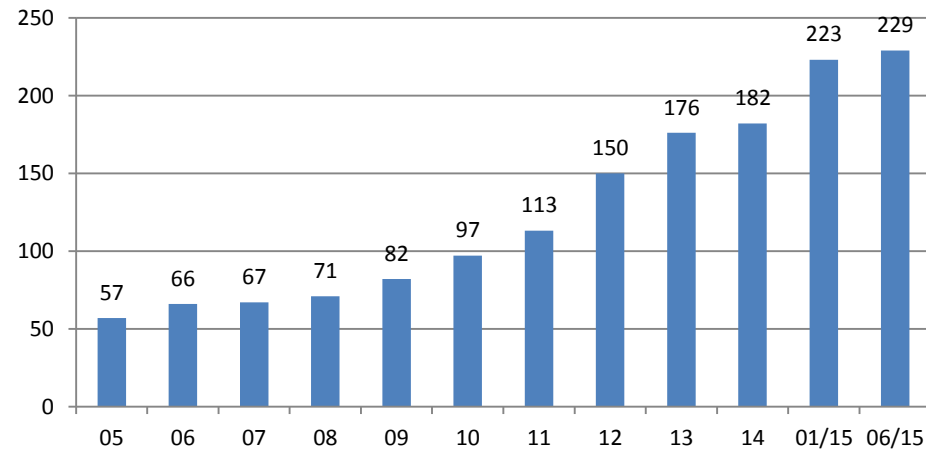
## Japanese investment in Bangladesh



Source : Bangladesh Bank

Fiscal Year

## Number of Japanese company operating in Bangladesh



Source : JETRO